



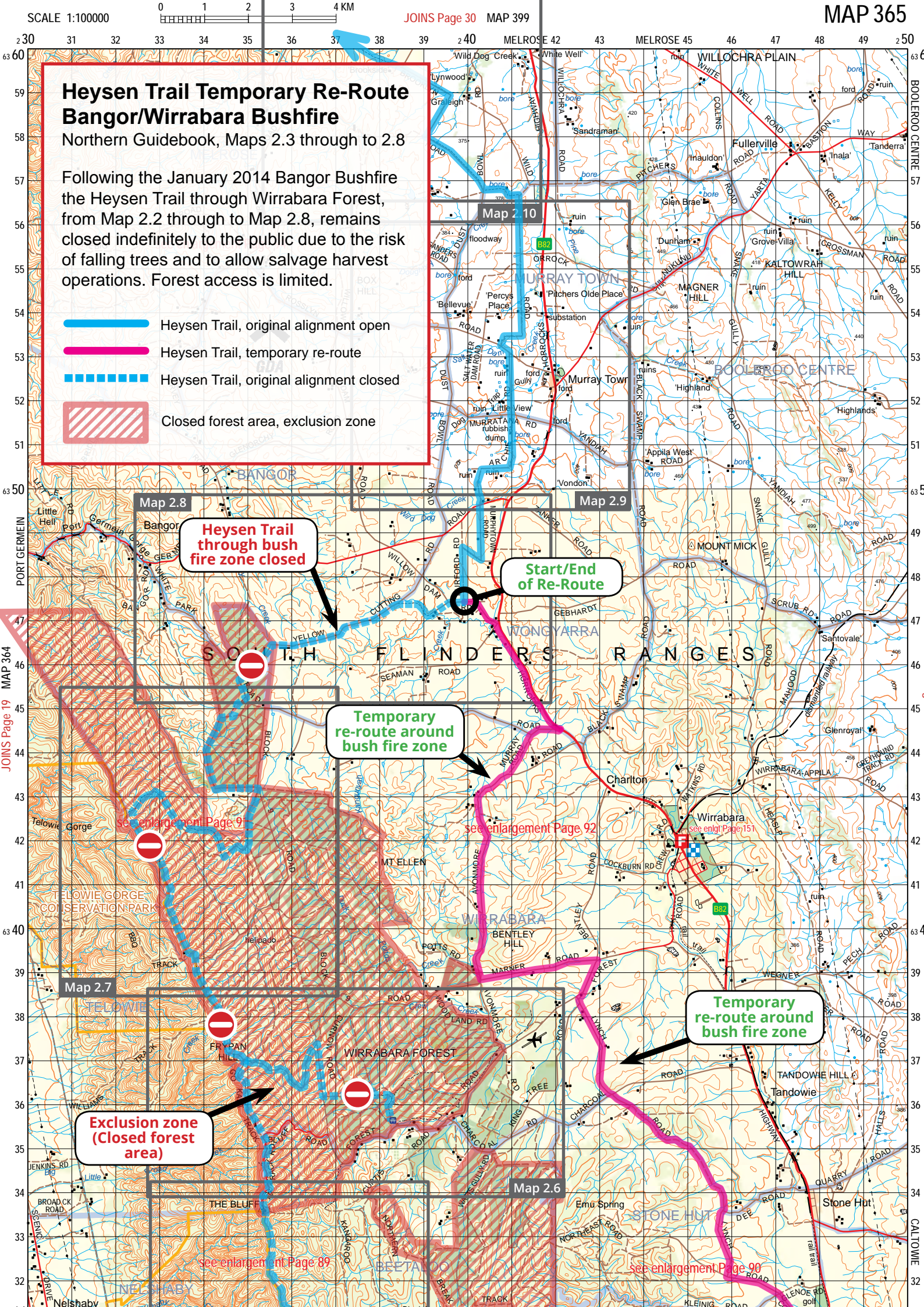


# Heysen Trail Temporary Re-Route Bangor/Wirrabara Bushfire

Northern Guidebook, Maps 2.3 through to 2.8

Following the January 2014 Bangor Bushfire the Heysen Trail through Wirrabara Forest, from Map 2.2 through to Map 2.8, remains closed indefinitely to the public due to the risk of falling trees and to allow salvage harvest operations. Forest access is limited.

-  Heysen Trail, original alignment open
-  Heysen Trail, temporary re-route
-  Heysen Trail, original alignment closed
-  Closed forest area, exclusion zone



Map 2.8

**Heysen Trail through bush fire zone closed**

**Start/End of Re-Route**

**Temporary re-route around bush fire zone**

see enlargement Page 91

see enlargement Page 92

**Temporary re-route around bush fire zone**

**Exclusion zone (Closed forest area)**

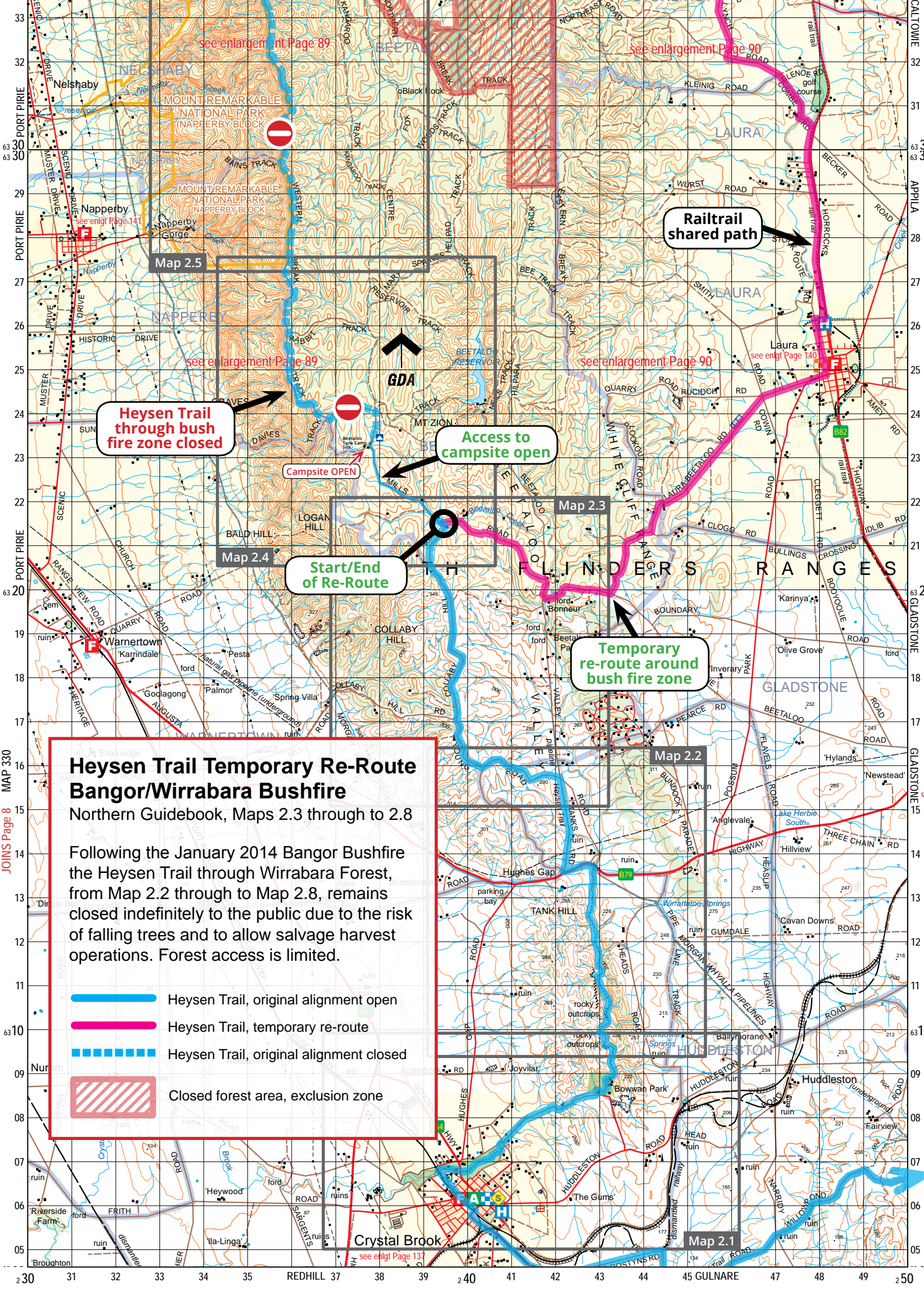
Map 2.6

see enlargement Page 89

see enlargement Page 90

JOINS Page 19 MAP 364





see enlargement Page 89

see enlargement Page 90

Map 2.5

Map 2.3

Map 2.2

Map 2.1

**Heysen Trail through bush fire zone closed**

**Railtrail shared path**

**Access to campsite open**

**Start/End of Re-Route**





**Temporary re-route around bush fire zone**

Campsite OPEN

## Heysen Trail Temporary Re-Route Bangor/Wirrabara Bushfire

Northern Guidebook, Maps 2.3 through to 2.8

Following the January 2014 Bangor Bushfire the Heysen Trail through Wirrabara Forest, from Map 2.2 through to Map 2.8, remains closed indefinitely to the public due to the risk of falling trees and to allow salvage harvest operations. Forest access is limited.

-  Heysen Trail, original alignment open
-  Heysen Trail, temporary re-route
-  Heysen Trail, original alignment closed
-  Closed forest area, exclusion zone

JOINS Page 8 MAP 330

Crystal Brook

see enlgt Page 137



# Wirrabara Forest - now open to visitors.

## Partial access restored after fire.

ForestrySA has reopened parts of the Wirrabara Forest to visitors, following January's Bangor fire.

ForestrySA is pleased to advise that popular forest locations the Wirrabara Picnic Ground, Ippinitchie Campground, King Tree Paddock and "A" Plantation are now open for visitors.

The Bangor fire burnt a large part of the Wirrabara Forest in early 2014, causing a potential risk to public safety.

Most of the forest remains closed to the public due to the risk of falling trees and to allow salvage harvest operations to be carried out. ForestrySA will reopen these areas as soon as it is safe to do so.

Please refer to the map adjacent for more information on these locations.

