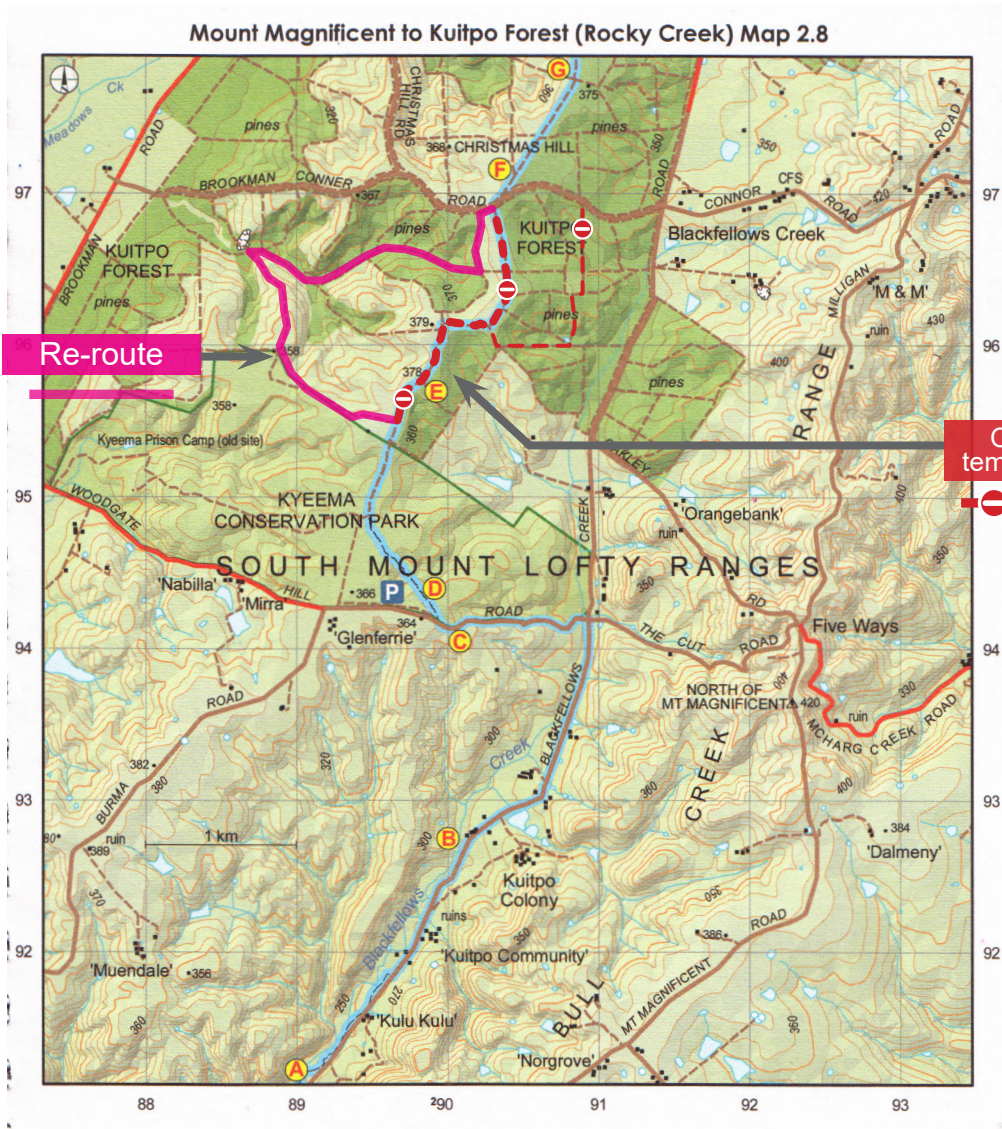


**August 2019**

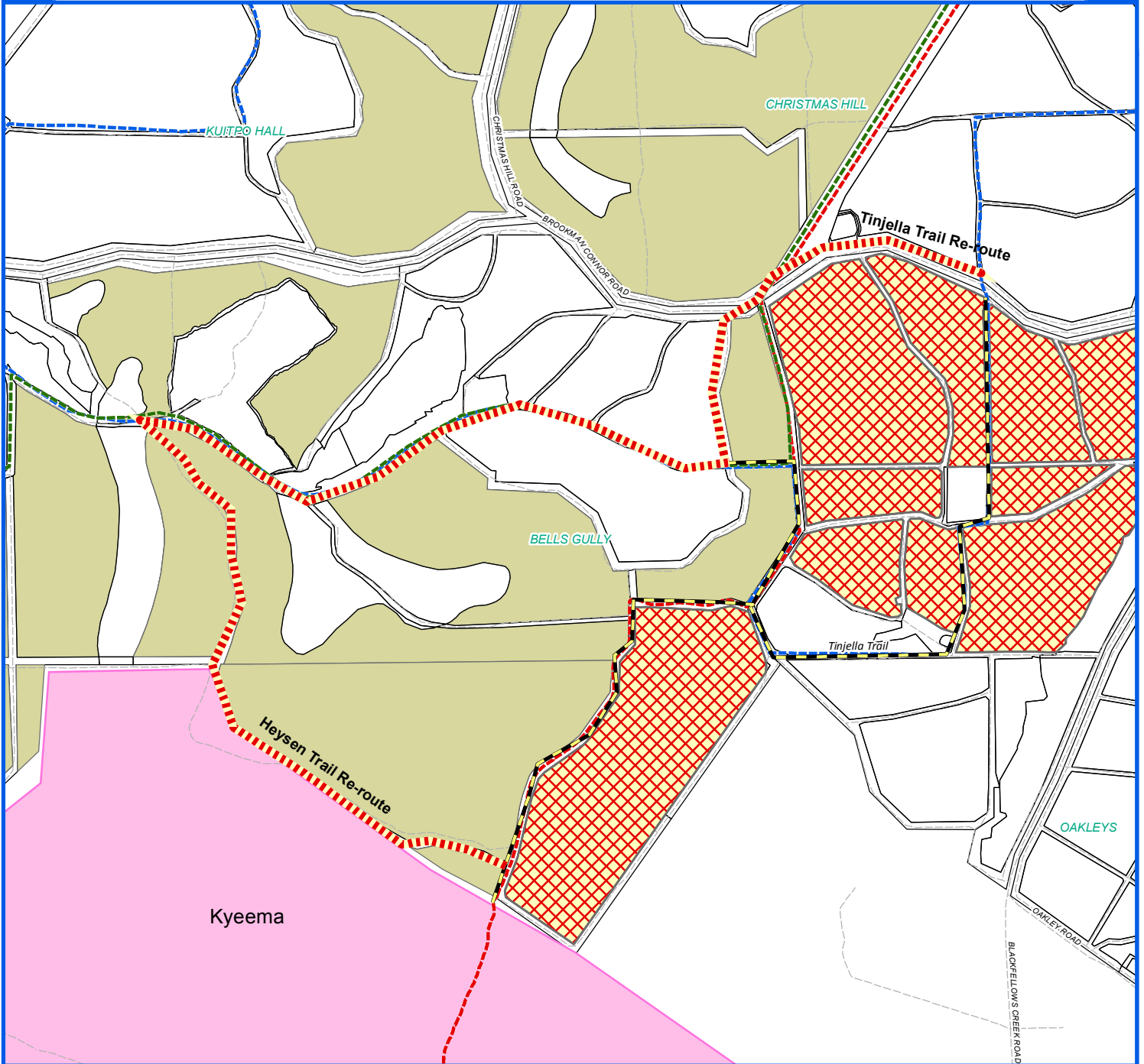
Southern Guidebook 2014, Map 2.8

### Reroute at Bells Gully, Kuitpo Forest

Due to intensive harvesting operations currently in progress within the Bells Gully locality of Kuitpo Forest Reserve, a section of the Heysen Trail has been temporarily re-routed.



# NOTICE



- Major Road, Minor Road
- Plantation, Native Forest
- DEW Parks, SA Water (no entry)
- Heysen Trail, Kidman Trail
- Mawson Trail, ForestrySA Trails
- Forest Information, Picnic Area
- Camping, Huts



Active Operations.  
Restricted Access.

Section Closed

Trail Re-route

**NO PUBLIC ENTRY INTO RESTRICTED ACCESS AREAS.**  
Operations may also be present in areas not displayed.  
For your safety obey all forest signage.  
The Forest Ranger may impose further conditions at any time.



Disclaimer: This document was produced by or on behalf of the Government of South Australia. The Government of South Australia gives no warranty and makes no representation, express or implied, as to the accuracy of the information contained within this document or the suitability of the information for any purpose. Any use of the information contained in this document (whether authorised or not) is at the sole risk of the user and the Government of South Australia disclaims responsibility for any loss or damage incurred as a result of such use. The information is provided solely on the basis that users of the information will make their own assessment as to the accuracy of the information and users are advised to verify all information contained within this document.

**For more information visit:**  
[www.forestrysa.com.au](http://www.forestrysa.com.au)

Updated Date: 23/07/2019

