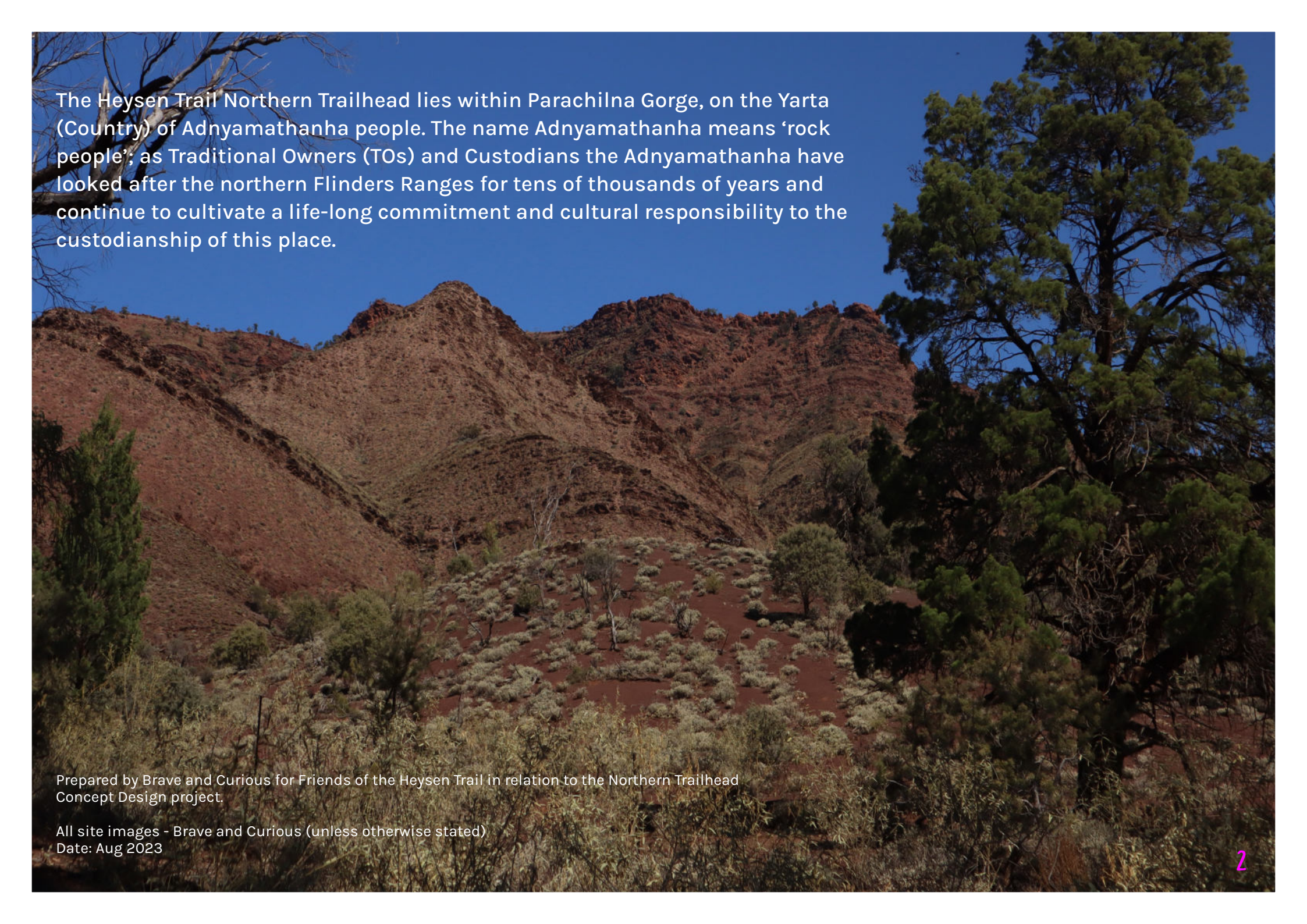


HEYSEN TRAIL NORTHERN TRAILHEAD

CONCEPT DESIGN





The Heyesen Trail Northern Trailhead lies within Parachilna Gorge, on the Yarta (Country) of Adnyamathanha people. The name Adnyamathanha means 'rock people'; as Traditional Owners (TOs) and Custodians the Adnyamathanha have looked after the northern Flinders Ranges for tens of thousands of years and continue to cultivate a life-long commitment and cultural responsibility to the custodianship of this place.

Prepared by Brave and Curious for Friends of the Heyesen Trail in relation to the Northern Trailhead Concept Design project.

All site images - Brave and Curious (unless otherwise stated)
Date: Aug 2023

THE HEYSEN TRAIL

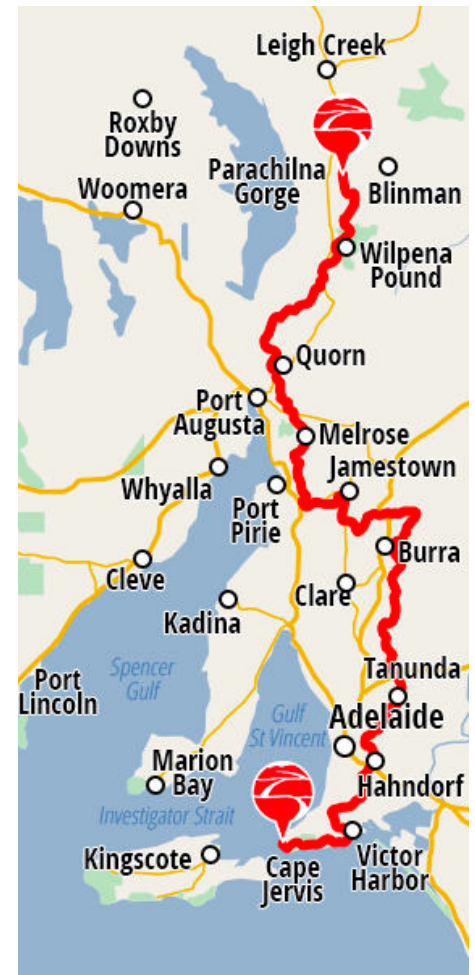
The Heysen Trail is one of the world's great walking trails and the longest dedicated walking trail in Australia.

The Friends of the Heysen Trail advocate for the 1,200 km trail, from its beginnings at the southern trailhead at Cape Jervis, to the Mt Lofty Ranges and through to the Flinders Ranges, where the northern trailhead is located at Parachilna Gorge.

The Flinders Ranges are unique for their rugged gorges, historic towns, pastoral stations and hardy vegetation. The Parachilna Gorge trailhead location, at the confluence of creeks and pastoral stations, is in the thick of this special, remote Adnyamathanha Yarta.

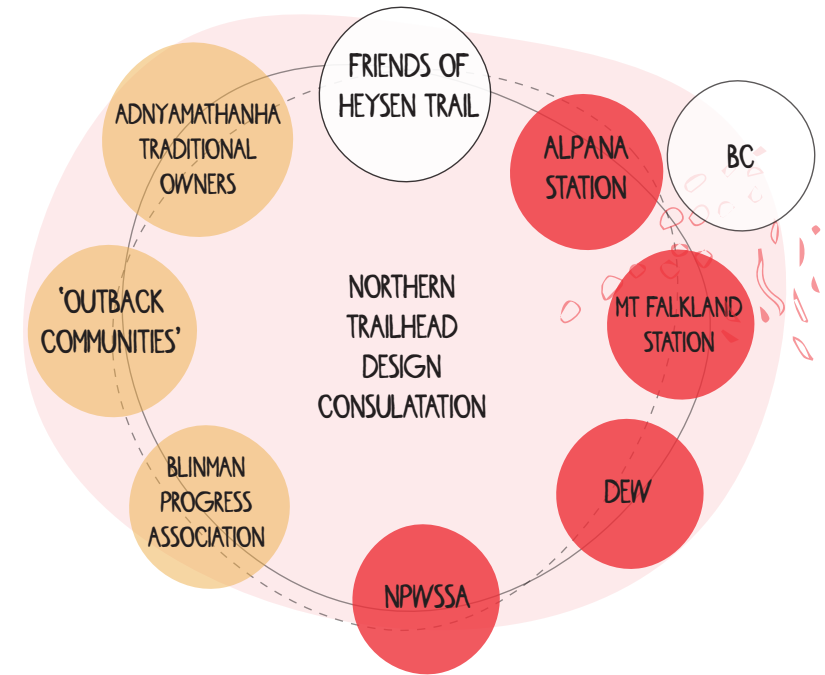
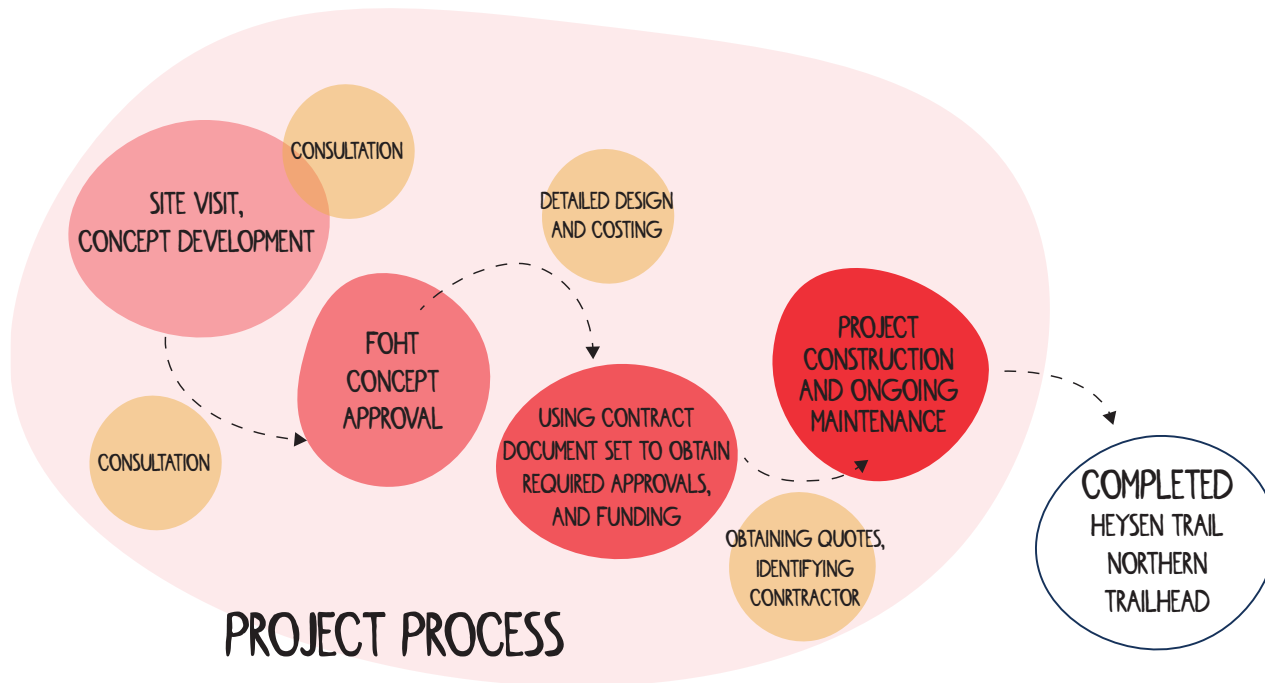
Whilst the Heysen Trail northern trailhead's built form is currently modest, it is a significant place - of anticipation / celebration for completing and starting walkers, and for their supporters. It is a threshold that forms part of a much larger journey and cultural and regional context.

A re-development of the Trailhead must provide required local amenity improvements, whilst striving to engage with the meaning and connections embedded within this place - the Heysen Trail journey, Adnyamathanha connections, and the Parachilna Gorge's ancient geology.

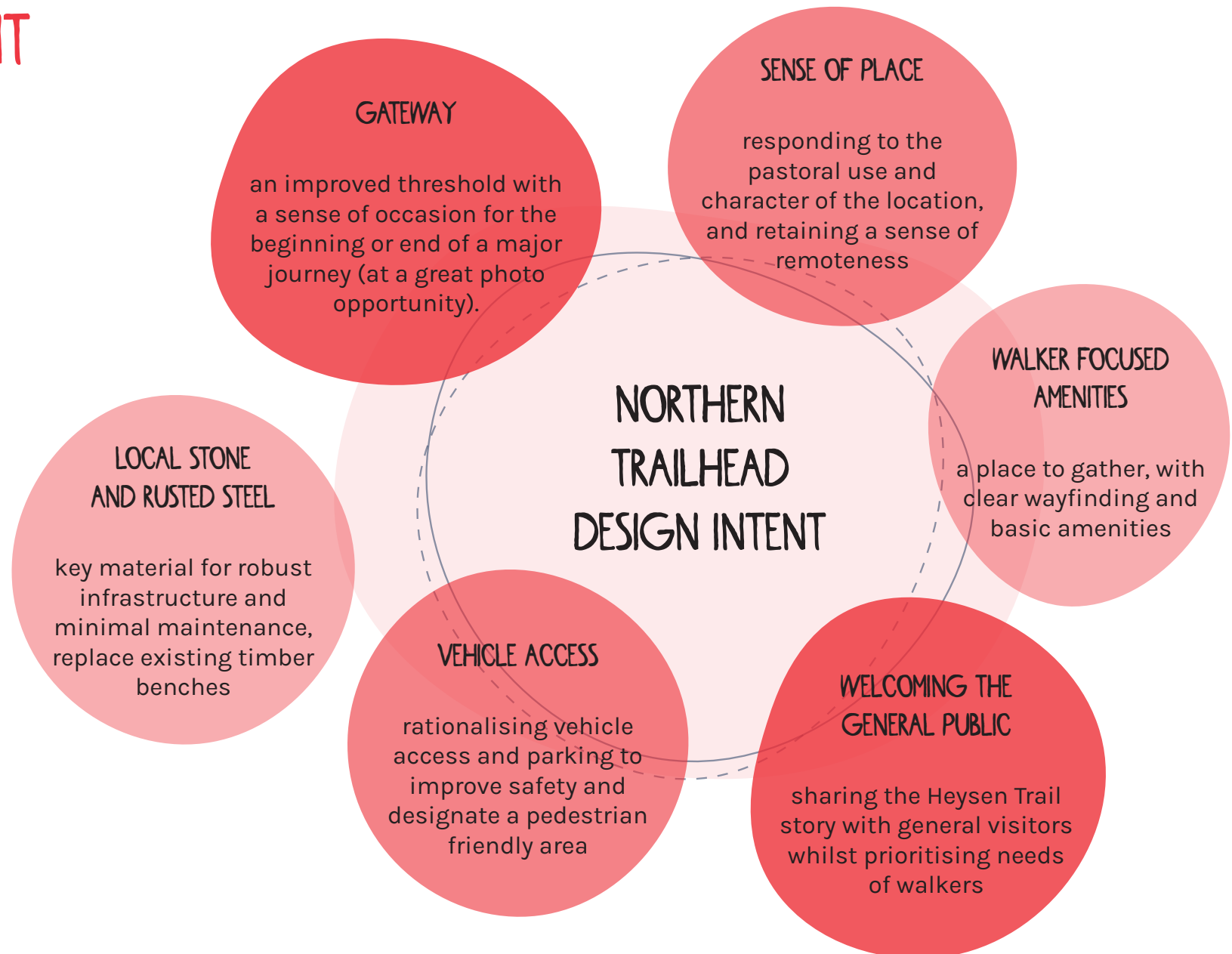


DEVELOPING A SHARED CONCEPT

This report summarises the Concept Design for the Heysen Trail northern trailhead, developed by Friends of the Heysen Trail (FOHT) and Brave and Curious (BC) through continued consultation with a range of key local stakeholders.



DESIGN INTENT



Existing



Remove existing timber fence stile and associated signage.



Retain existing entry signage.



Retain existing interpretation shelter, and water tank.

Remove all other free standing signage and consolidate within existing interpretation shelter.



Re-purpose furniture timber for corner rural fence posts and bollards.

Proposed Planting List

Trees to be planted in small groupings. Shrubs and Groundcovers to be planted as tubestock or direct seeded. All planting to be protected by grazing animal proof fence and watered monitored for the initial 2 years of establishment.

Selection of appropriate plantings include:

TREES (6-10m)

Acacia aneura
Acacia oswaldii
Acacia salicina
Casuarina pauper
Eucalyptus camaldulensis
Eucalyptus socialis
Myoporum platycarpum
Pittosporum angustifolium

EDIBLE TREES (6-10m)

Alectryon oleifolius ssp canescens (Bullock bush)
Citrus glauca (Desert lime)
Exocarpos cupressiformis - requires host
Santalum acuminatum (Quandong) - requires host
Santalum lanceolatum
Santalum spicatum (Sandalwood) - requires host

SHRUBS / LOW SHRUBS (0.8-1.2m)

Alyogyne huegelii
Acacia ligulata
Acacia victoriae
Dodonaea viscosa angustissima
Eremophila maculata
Eremophila sturtii
Maireana astrotricha
Maireana sedifolia
Rhagodia spinescens
Scaevola spinescens
Senna artemisioides var. artemisioides

GROUNDCOVERS / GRASSES (0.3-0.8m)

Chialanthus australensis
Ptilotus obovatus (Silver Mulla Mulla)
Senecio magnificus
Triodia scariosa ssp. Scariosa



Proposed

1 Realign start / finish of Heysen Trail - Construct and install northern gateway feature - curving local stone wall with steps and seating, with mild steel gateway



2 Install additional signage panel using same material and height of existing panel.



3 Construct 450mm high stone meeting / yarning circle with a central equipment table.



4 Construct rural wire and timber post fence to discourage access beyond this raised area.



5 White Cypress Pine for vehicle bollards installed @ 1500mm centres.



6 Future addition
Install steel, timber and galvanised iron shade structure with tank.

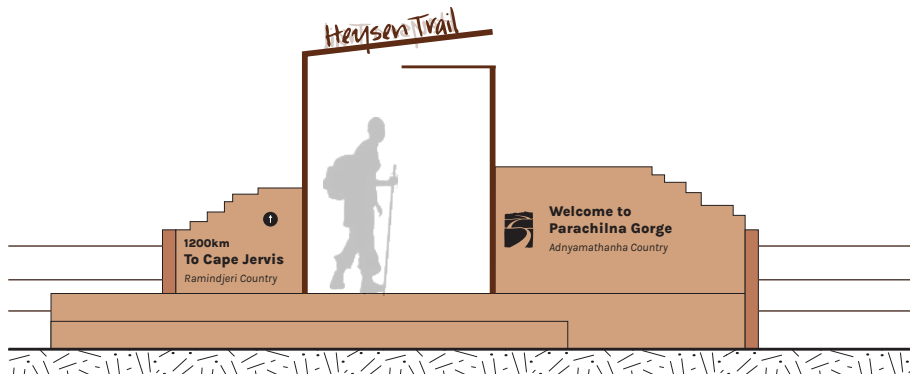


Gathering Area Concept Visualisation

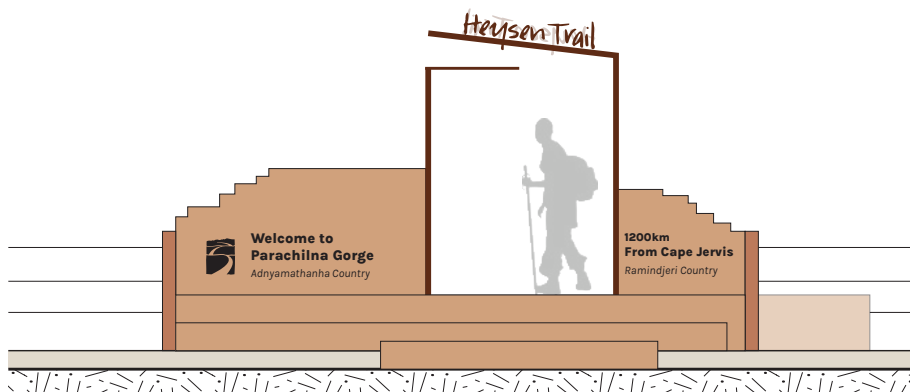
Stone seating circle, additional mild steel interpretation sign, stone plinth with mild steel archway, interpretation, gravel surface and site revegetation

Inset: End to End Group photo opportunity

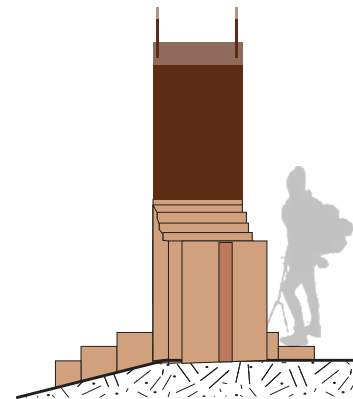




North (Carpark) Elevation



Southern Trail Approach Elevation



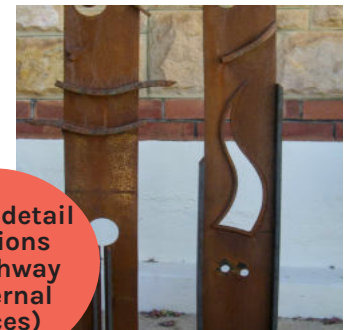
Side Elevation

Gateway Concept

- Local stone plinth (curved) - seat/step
- Mild steel archway with trail/ridgeline details on internal faces
- Mild steel lettering in 'Heysen Trail' font
- Powdercoated steel lettering - locations and acknowledgement of Country
- Mild steel post and wire fence



Mild steel lettering



Inset detail options (archway internal faces)



Powder-coated steel lettering



Stone plinth - seat/step

Seating Circle Concept

- Local stone curved seats
- Central stone table/artwork
- Artwork concepts TBC - could be a stylised trail map, or Adnyamathanha iconography or other



Gateway Approach Concept Visualisation

Stone plinth with mild steel archway, interpretation, walking track and site revegetation



HEYSEN TRAIL NORTHERN TRAILHEAD PLANTING LIST

Trees to be planted in small groupings. Shrubs and Groundcovers to be planted as tubestock or direct seeded.

All planting to be protected by grazing animal proof fence and watered monitored for the initial 2 years of establishment.

TREES (6-10m)

Acacia aneura
Acacia oswaldii
Acacia salicina
Casuarina pauper
Eucalyptus camaldulensis
Eucalyptus socialis
Myoporum platycarpum
Pittosporum angustifolium

EDIBLE TREES (6-10m)

Alectryon oleifolius ssp canescens (Bullock bush)
Citrus glauca (Desert lime)
Exocarpos cupressiformis - requires host
Santalum acuminatum (Quandong) - requires host
Santalum lanceolatum
Santalum spicatum (Sandalwood) - requires host

SHRUBS / LOW SHRUBS (0.8-1.2m)

Alyogyne huegelii
Acacia ligulata
Acacia victoriae
Dodonaea viscosa angustissima
Eremophila maculata
Eremophila sturtii
Maireana astrotricha
Maireana sedifolia
Rhagodia spinescens
Scaevola spinescens
Senna artemisioides var. artemisioidesa

GROUNDCOVERS / GRASSES (0.3-0.8m)

Cheilanthes austrotenuifolia
Ptilotus obovatus (Silver Mulla Mulla)
Senecio magnificus
Triodia scariosa ssp. Scariosa

TREES (6-10m)



Acacia oswaldii Umbrella Wattle



Acacia salicina Willow Wattle



Casuarina pauper Belah



Eucalyptus camaldulensis River Red Gum



Eucalyptus socialis Red Mallee



Myoporum platycarpum Sugarwood



EDIBLE TREES (5-8m)

Alectryon oleifolius ssp canescens Bullock bush



Citrus glauca Desert Lime



Exocarpos cupressiformis Native Cherry- requires host



Pittosporum angustifolium Gumby Gumby - Native Apricot



Santalum acuminatum Native plum or Quandong - requires host



Santalum lanceolatum Northern Sandalwood - requires host



Santalum spicatum Sandalwood - requires host



LOW SHRUBS (0.8-1.2m)

Alyogyne huegelii Native hibiscus



Acacia victoriae Bardi Bush
Acacia ligulata Umbrella Bush



Dodonaea viscosa angustissima Slender Hop-bush



Eremophila maculata Spotted Emu Bush
Eremophila sturtii Narrow-leaf Emu Bush



Maireana astrotricha Low Bluebush
Maireana sedifolia Pearl Bluebush



Rhagodia spinescens Spiny Saltbush



Scaevola spinescens Currant Bush



Senna artemisioides var. artemisioidesa Silver Cassia



GROUNDCOVERS / GRASSES (0.3-0.8m)

Ptilotus obovatus Silver Mulla Mulla



Senecio magnificus Showy Groundsel



Triodia scariosa ssp. Scariosa Porcupine Grass



